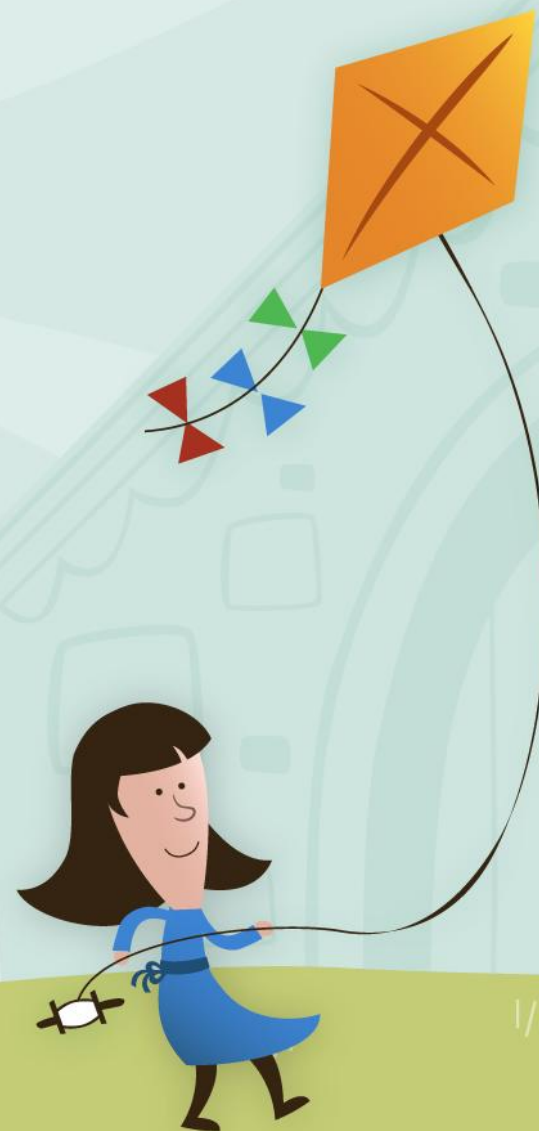




Welcome to Stocks Green Primary School





Our School Motto



'Learning to Live,
Living to Learn.'



'Learning to Live, Living to Learn'





Stocks Green's Vision



Our vision for our whole community:

A compassionate and inclusive school where pupils, staff and families build happy memories and love attending every day.



Our vision for our pupils

A school that is forward thinking and seeks to provide the experiences and opportunities needed for future success.

A school that engages pupils in stimulating learning that creates a thirst for knowledge.

A school that teaches everyone to have a positive impact on the world.



Our vision for our staff

A school where everyone is valued and people are at the centre of all that we do.

A school where everyone strives for excellence in teaching and learning.



'Learning to Live, Living to Learn'





Ofsted 2024 - Good

Pupils are happy at Stocks Green Primary School. They are safe and comfortable within the kind, caring school community. Staff know pupils well and are delighted by their successes. Relationships throughout the school are warm. They are typified by high expectations and respect, which is central to the school's rules and values.

Pupils like learning and the school has high expectations for them. They find their work interesting and experiences memorable. They behave well in lessons and are keen to do well.



'Learning to Live, Living to Learn'





Ofsted 2024 - Good

Parents are overwhelmingly positive about the school. They value the community atmosphere and are excited by the recent initiatives and improvements. One parent summed up the views of many in describing a 'genuinely wonderful school, with a new sense of ambition and purpose.'



'Learning to Live, Living to Learn'





Data - 3 year average

	Statutory Assessments	
	Stocks Green 3 year average	National 3 Year Average
GLD	83.6%	66.7%
KEY STAGE 1		
Y1 phonics screening	84%	80%
Key Stage 2		
EXS+ Reading	78%	74%
GDS Reading	34%	30%
EXS+ Writing	84%	72%
GDS Writing	19%	13%
EXS+ Maths	78%	73%
GDS Maths	32%	25%
Combined EXS+ RWM	69%	61%
Combined GDS RWM	14%	8%



'Learning to Live, Living to Learn'





SCHOOL	Year 2018	Year 2019	Year 2020	Year 2021	Year 2022	Year 2023	Year 2024	Year 2025
Bennett Memorial Church of England School	3	5	9	3	5	2	4	4
Leigh Academy (Formerly Hayesbrook School)	3	0	1	2	2	8	6	12
Hillview High School for Girls	5	4	7	5	3	3	5	3
Leigh Academy (Hugh Christie)	0	1	0	1	2	2	0	0
Knole Academy	1	0	0	0	1	1	0	0
Other	0	0	0	0	0	0	2	10
Trinity School	0	3	0	0	0	1	0	1
Skidders Kent Academy	0	0	0	0	2	0	0	2
The Judd Grammar School for Boys	2	1	4	1	2	2	4	1
St Gregory's Roman Catholic School	4	3	1	1	1	3	0	0
Tunbridge Wells Grammar School for Boys	4	1	2	6	6	3	3	2
Tunbridge Wells Grammar School for Girls	0	1	0	0	0	0	0	0
Weald of Kent Grammar School for Girls	9	5	4	6	3	5	4	3
Tonbridge Grammar School for Girls	1	0	3	1	1	2	1	2
The Skidders School	0	4	0	0	0	0	0	1
Hadlow Rural Community School	0	2	0	1	2	0	0	0
Sackville School	0	0	1	1	0	0	0	0
Radnor House	0	1	0	0	0	0	0	0
Sevenoaks School	0	0	0	1	0	0	0	0
Kent College	0	0	0	0	1	0	0	0
Hilden Grange	0	0	0	0	0	0	1	0
St Olaves and St Saviours Grammar School	0	0	0	1	0	1	1	0
Solefields School Sevenoaks	0	0	0	0	1	0	0	0
Percentage of children attending grammar school	50%	39%	40%	47%	39%	43%	45%	28%





Early Reading



Reading is at the heart of provision. Pupils learn to read early and well. Staff are experts in early reading. *Ofsted 2024*

We use the phonics scheme 'Sounds Write' to develop early reading and have invested in new books to support the scheme.



'Learning to Live, Living to Learn'





Computing



The school has recently invested in robotics kits for children to use in each different year group to support their learning in computing.



'Learning to Live, Living to Learn'





OPAL



The school is working hard to continuously improve play time by working with OPAL Play.



'Learning to Live, Living to Learn'





OPAL
Lunchtimes





OPAL
Lunchtimes





Passport of Possibilities

PASSPORT OF POSSIBILITIES

The school has developed an extensive personal development programme. Pupils benefit from a well-planned curriculum which helps pupils to learn about themselves and the world. Pupils are enthusiastic about the additional opportunities provided to them. For example, during the inspection some pupils were learning how to ride their bicycles safely and others took part in a science-based trip to another school. *Ofsted 2024*



'Learning to Live, Living to Learn'





Enrichment Activities

'Learning to Live, Living to Learn'



Enrichment Activities

'Learning to Live, Living to Learn'



Performing in Front of an Audience

'Learning to Live, Living to Learn'



Clubs and Swimming

'Learning to Live, Living to Learn'



Part of the Local Community



We pride ourselves on being part of the local community of Hildenborough.



'Learning to Live, Living to Learn'





Wrap-Around Care



Early morning and
after school clubs.



'Learning to Live, Living to Learn'





Outdoor Learning

'Learning to Live, Living to Learn'



Outdoor Learning

'Learning to Live, Living to Learn'



Outdoor Learning

'Learning to Live, Living to Learn'



Life In EYFS



Children get to learn in both the indoor and outdoor environment



'Learning to Live, Living to Learn'





PTA



The school has an active PTA which fund raises for different projects.



'Learning to Live, Living to Learn'





Meals and Snacks



Children in EYFS
and Key Stage 1
are entitled to
Universal Infant
Free School Meals



'Learning to Live, Living to Learn'





Admissions

Primary school places

Primary school applications open: Tuesday 5 November 2024.

You must apply for a primary school place if your child is:

- due to start primary or infant school (reception year)
- at infant school (year 2) and is due to start junior school (year 3)
- at primary school (year 2) and you want them to move to a junior school at the start of year 3.

Admissions are made via the standard Kent form. In this form you will list your top three choices for schools.



'Learning to Live, Living to Learn'





Questions



If you have any questions, I am happy to answer them either now or after your tour.



'Learning to Live, Living to Learn'

